

# Research proposal of a new clinic model for the interpretation of Lateral Elbow Pain: is it time to change?

L. Di Filippo<sup>1,2</sup>, D. Pennella<sup>1,3</sup>, F. Maselli<sup>4,5</sup>, P. Arrigoni<sup>6,7</sup>

<sup>1</sup> University of Tor Vergata, Medicine Department, Rome, Italy

<sup>2</sup> FisioAnalysis Maedica, Alessandria, Italy

<sup>3</sup> Manual Therapy Lab Clinic, Bari, Italy

<sup>4</sup> DINOEMI Department, Genoa University, Genoa, Italy

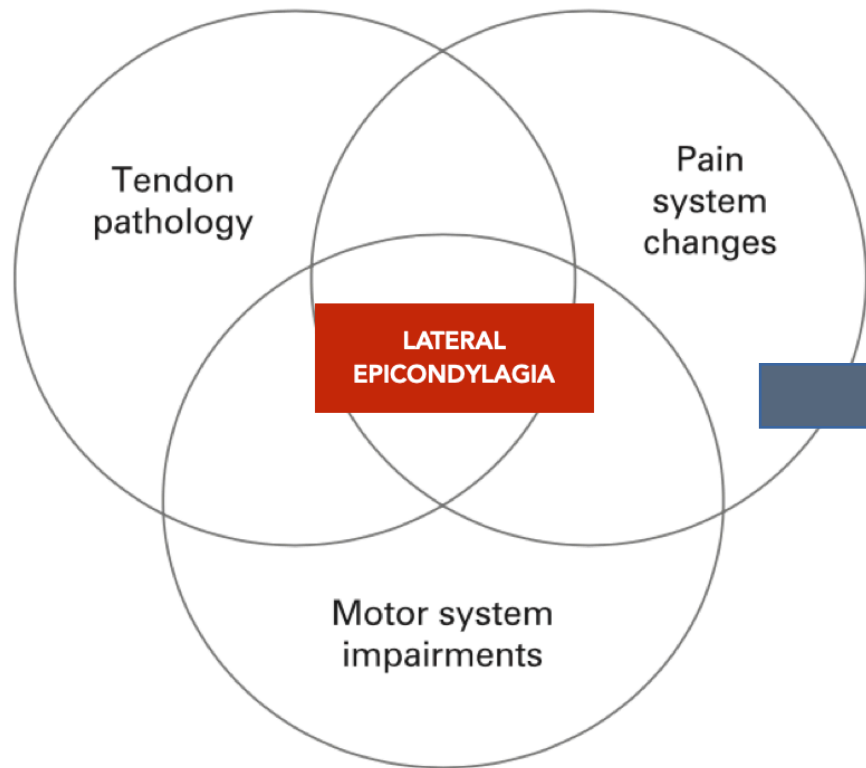
<sup>5</sup> Sovrintendenza Sanitaria Regionale Puglia INAIL Bari, Italy

<sup>6</sup> University of Studies of Milan, Milan, Italy

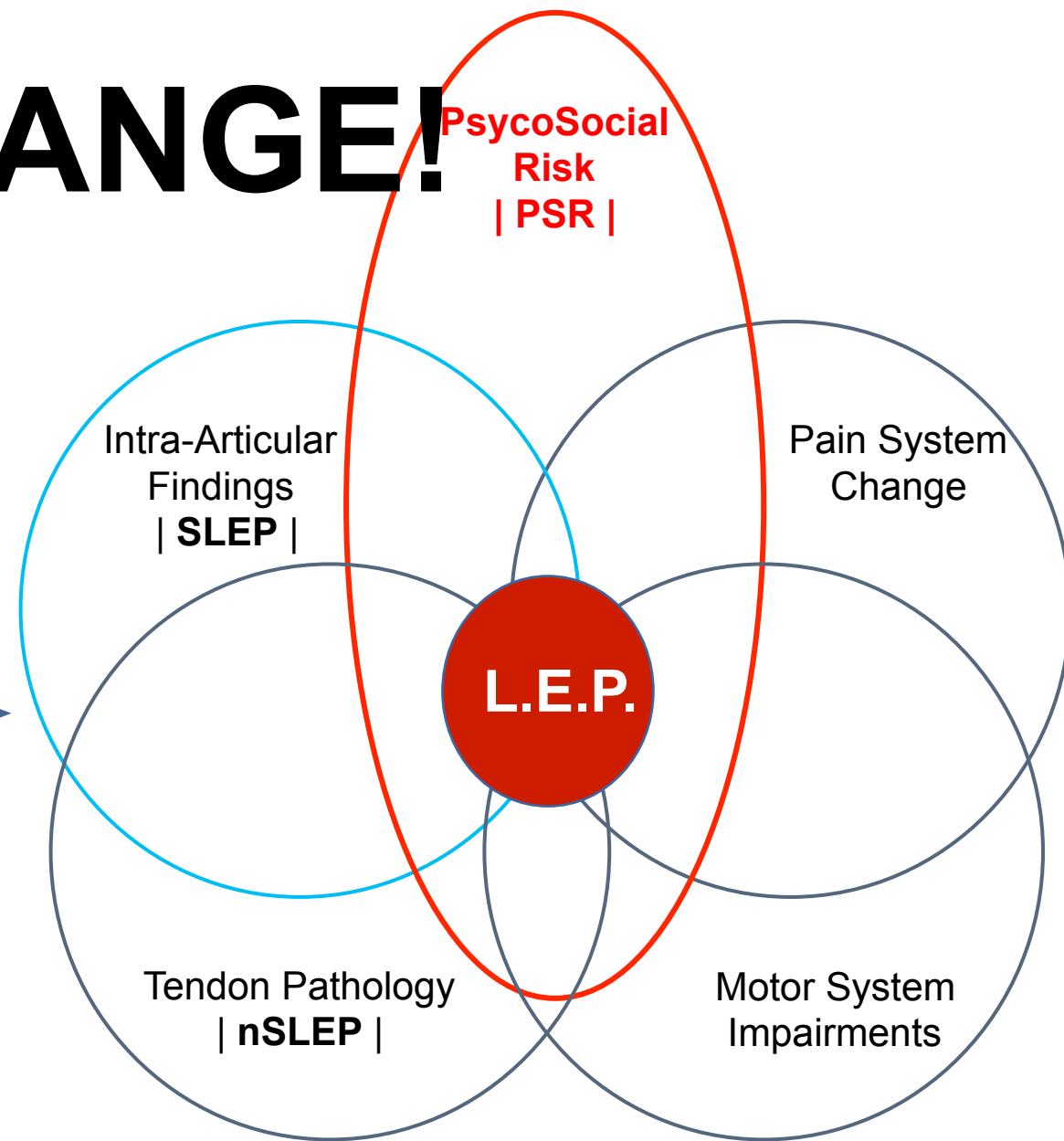
<sup>7</sup> ASST Gaetano Pini CTO



# IT'S TIME TO CHANGE!

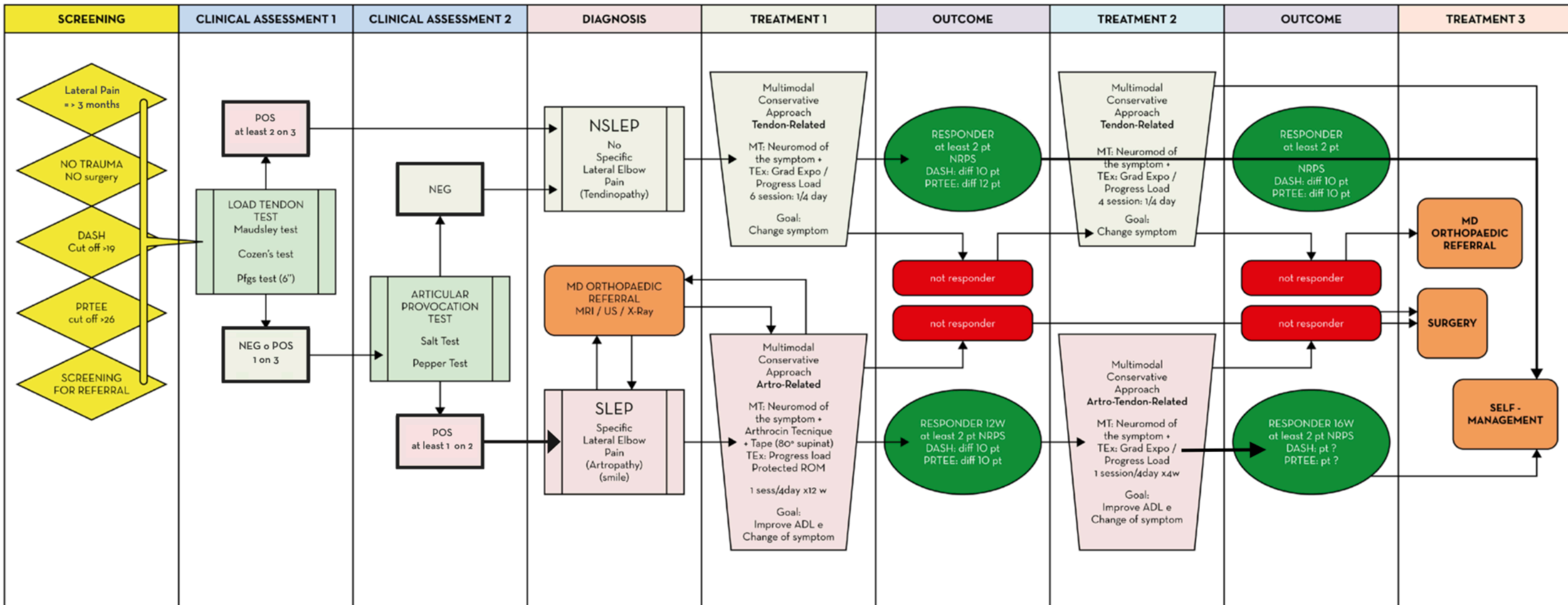


*Coombes, Bisset, Vincenzino, 2008*



*Di Filippo, Pennella, Maselli, Arrigoni, MLTJ 2020*

# I-APPLEp



## Integrated – APProach of Lateral Elbow pain